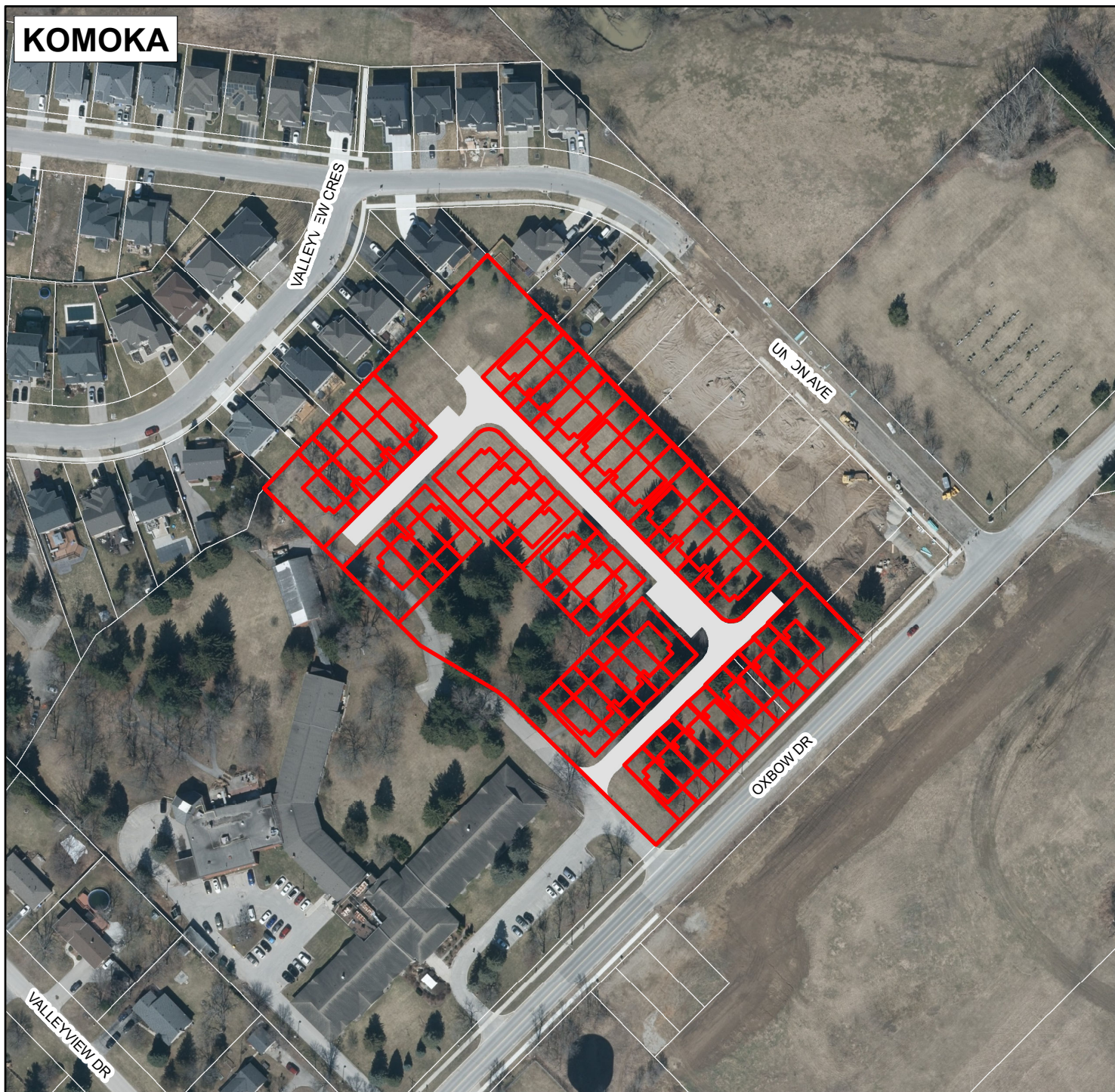


**KOMOKA**



## LOCATION MAP

Description:  
OXBOW DEVELOPMENTS  
PROPOSED PLAN OF CONDOMINIUM  
MUNICIPALITY OF MIDDLESEX CENTRE

File Number:  
39T-MC-CDM2301

Prepared by: Planning Department,  
The County of Middlesex, June 29, 2023



## LEGEND

 SUBJECT LANDS



1:2,000  
0 40 80  
Metres