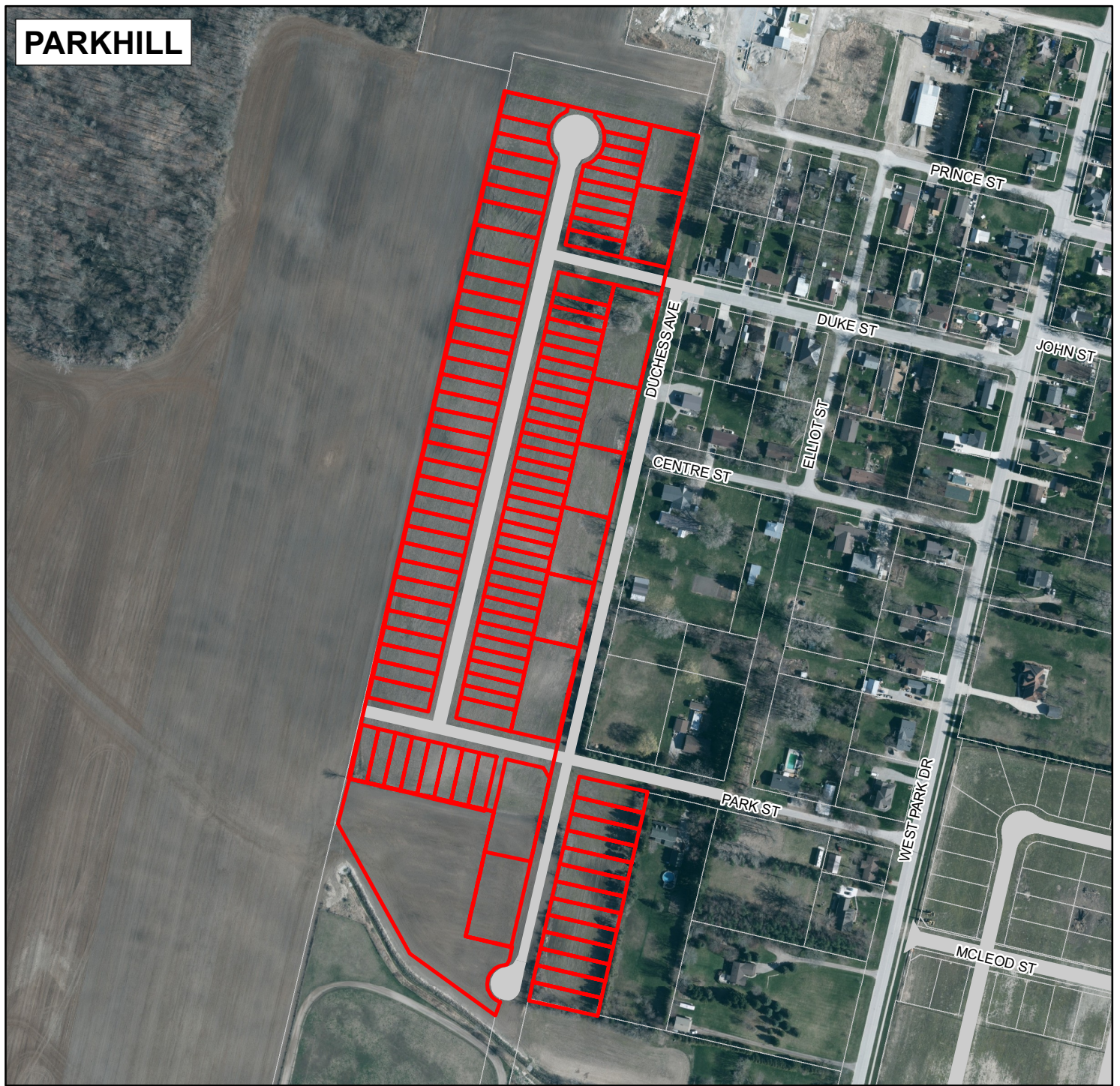


PARKHILL



LOCATION MAP

Description:
PROPOSED PLAN OF SUBDIVISION
WESTWOOD
MUNICIPALITY OF NORTH MIDDLESEX

File Number:
39T-NM2201

Prepared by: Planning Department,
The County of Middlesex, August 2nd, 2023



LEGEND

 SUBJECT LANDS



1:4,000
0 100 200
Metres