

# Pulse

Published by Four Counties Health Services Foundation Communications Committee

## Medical Equipment Appeal - \$189,500



excellent care they receive and the medical equipment it takes to enhance this care.

Our dedicated staff, physicians, and volunteers strive for continued excellence in the care they provide. With this activity comes the need to refresh and renew existing equipment and technology which are essential tools to deliver quality, safe, and efficient care to you and your loved ones.

In our Fall/Winter Appeal our foundation is raising funds to purchase state-of-the-art medical equipment to be used directly for patient care here at FCHS.

### Nine Electric Cardiogram Patient Monitors - \$108,000

An electrocardiogram (ECG) is a test used to check your heart's rhythm and electrical activity. Sensors attached to the skin detect the electrical signals produced by your heart each time it beats.



### Bariatric Patient Bed - \$60,000

A bariatric bed is a heavy-duty bed that is wider than the standard hospital bed. A patient bariatric bed safely and comfortably accommodates larger individuals.



### IT Closet Switch - \$15,000

An IT closet switch is a device that is critical to patient care as this device provides connectivity to patient electronic medical care.



### Bariatric Patient Stretcher - \$6,500

A bariatric stretcher comfortably and safely accommodates patients of all sizes. It helps to prevent pressure sores and falls while supporting safe transport between care areas.



**Jon Dreyer, MD, CM, FRCPS**  
Deputy Chief of Staff  
Four Counties Site  
Middlesex Hospital Alliance

**FCHS** Middlesex  
Hospital Alliance **FOUNDATION**

Name: \_\_\_\_\_

Address: \_\_\_\_\_

City: \_\_\_\_\_ Province: \_\_\_\_\_

Postal Code: \_\_\_\_\_

### YES! Here is my gift to help support the FCHS Medical Equipment Appeal

Donation Amount: \$ \_\_\_\_\_

Payment Method: ☐ CHEQUE ☐ VISA ☐ MASTERCARD

Card No.: \_\_\_\_\_ Expiry: \_\_\_\_\_ CVC: \_\_\_\_\_

Signature: \_\_\_\_\_

Email: \_\_\_\_\_

☐ **YES!** I would like to join the **Monthly Giving Program**

## FCHS Foundation Update



**A**s chair of the Foundation and on behalf of the Board of Governors, I hope this newsletter finds you well. As we welcome fall/winter it is my hope that we may get through the flu season and the toll of the omicron variants while avoiding further stress on our health care system. Let us do what we can to remain safe and healthy.

Thank you to our community for your support and donations toward the purchase of medical equipment that was targeted in the Foundation's spring appeal.

This newsletter is one of the ways we reach out to donors and residents in our Four Counties area. Our role as a foundation is to work with our hospital partners to determine how to best support medical care for area residents.

Illustrated on the front page of this newsletter is necessary medical equipment for our FCHS

Emergency Department and In Patient Unit totaling \$189,500.

We continue to inform the public that the government does not fund the purchase of capital equipment, which is the responsibility of the Foundation. Local businesses, municipalities, service clubs, and you provide that support. We are proud of the quality healthcare at FCHS and the state-of-the-art equipment that keeps our hospital running efficiently. The Foundation and staff appreciate the community support that makes FCHS a vibrant healthcare village. Consider donating what you can to this season's appeal.

I want to offer my heartfelt thanks to frontline workers who have given their commitment to our hospital throughout this pandemic. Over the summer, we bid a fond farewell to some dedicated staff and I personally want to thank them and wish them well with their future endeavours.

The next time you see a frontline worker consider saying "thank you; we appreciate what you do."

We are pleased to report the successful return of our golf tournament after a 2-year hiatus. The event raised \$27,587; funds have gone toward the purchase of a defibrillator for FCHS Emergency Department and a medical refrigerator for FCHS lab and diabetes departments. We also welcome new board member Lynda Pelcz to our foundation board.

On behalf of the Board of Governors of the Foundation, I would like to thank you for your commitment to our foundation as we support our mission "Building relationships that support Four Counties Health Services by raising awareness of critical equipment needs and encourage community ownership through giving" and our vision to "Ensure quality healthcare close to home".

**Tom Jeffery**  
Board Chair, FCHS Foundation

## Barb Gerber Testimonial 2022



**W**hen I was a teenager living in West Lorne, my dad had to take me to Four Counties Hospital in the middle of the night. I had left my contacts in too long. The doctors knew just what to do to take away the severe pain I had in my eyes. That was my first experience with Four Counties Hospital.

Later as a mother living in Glencoe, I visited the emergency room often for my children's broken bones, cut fingers, sore throats, ear infections, and fevers. We always left after being well looked after.

My husband and I over the years have had x-rays, ultrasounds, blood tests, colonoscopies, physiotherapy, and our own emergency visits. We are always very satisfied with the care we receive.

Recently my dad was a patient in the beautiful palliative care room. He and our family were treated with kindness, consideration, empathy, and love. The doctors, nurses, and many other staff members treated us like their

own family. We were so appreciative of the care Dad received. When Dad passed away we asked that memorial donations be made to the hospital in his memory.

Our little local hospital (as I like to call it) means so much to my family. I brag about it to all my city friends. We are so fortunate to have such a well-equipped facility right in our own community. With everyone's support, Four Counties Health Services will be here for us for many years to come.

Pictured are three generations of people who have used the hospital: Barb Gerber, Don Branchflower, and Carlie Gerber

### ■ **YES!** I would like to join the **Monthly Giving Program**

I would like to give \$ \_\_\_\_\_

**METHOD OF PAYMENT:** I authorize The Foundation of Four Counties Hospital to withdraw from my bank account through my financial institution on the 10th day of each month.

■ I have enclosed a VOID cheque    ■ I prefer to use my credit card    ■ VISA    ■ MASTERCARD

Card No.: \_\_\_\_\_ Expiry: \_\_\_\_\_ CVC: \_\_\_\_\_

Signature: \_\_\_\_\_ Date: \_\_\_\_\_

*You will receive a tax receipt at the end of the year. At any time you can change or cancel your monthly contribution by notifying*

**The Foundation: 519-693-4441 x 2438**

At FCHS Foundation, we appreciate your support and treat your information with respect. We do not rent, sell or trade any personal information. The information you provide will be used to issue your charitable donation receipt and to keep you informed of events and fundraising opportunities in support of FCHS. If at any time you wish to be removed from our mailing list, simply contact us: 519-693-4441 ext. 2438 or info@fchsfoundation@mha.tvh.ca

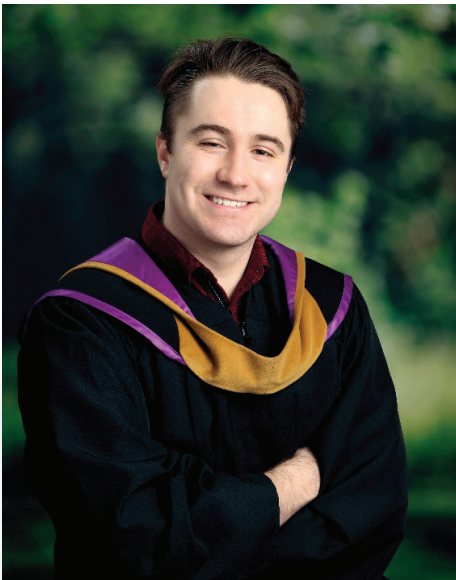


# What's Happening at Four Counties Health Services

## Hospital Update

**H**ealth Human Resources is a crucial element in delivering health care that patients in our community have come to expect. In this light we share with you two stories highlighting some of our people who have chosen to serve.

### Recruiting Local Talent



**R**iley Dolson is a nurse who completed his nursing school practical education at FCHS Emergency Department. He has recently accepted a full-time position to serve both our emergency department and inpatient population. A native of Chatham-Kent, Riley has proven himself a quick learner: he is knowledgeable, patient-centered, and demonstrates a very positive disposition with patients.

Riley is excited to join FCHS and enjoys the stimulating work environment. "FCHS has a clinical setting where I can continue to learn, as I am able to interact in higher-acuity cases in the emergency department with senior nurses. It's an environment which allows me to progress at my own pace while providing safe patient care," Riley added.

FCHS supports nursing students from a variety of local nursing schools to complete educational rotations at FCHS, many of whom are local and grew up in the area. "Being from a rural community himself, Riley feels that allows him a better understanding of the patients who come to FCHS. As a member of the community, it gives him a better understanding of the social determinants of health to provide a more holistic approach in the care of the rural patient," stated Deb Pastushuk, Clinical Manager, FCHS.

For more information on student placements at FCHS, please contact **Meg Sattin**, (519) 693-4441 x 5595.

### Volunteering Matters



**J**im and Joyce Beattie are long-standing FCHS volunteers, each having supported the hospital since 2014 and 2015, respectively. In particular, Jim liked to volunteer his services in Spiritual Care, while Joyce focused on Palliative Care. Recently, Jim and Joyce have left the area and we want to recognize their heartfelt contributions to the fabric of our hospital. We wish them well in their new adventures. The couple is humble in reflecting on their journey with the hospital: "We did what our hearts told us to do without looking for praise. Volunteering at FCHS was a rewarding experience, and we would encourage others to do the same."

Prior to the pandemic, volunteers supported numerous areas of the hospital, including but not limited to: Rehab, Adult Day Program, Gift Shop, Book Store, and Meal Buddy Program. Human Resources is rebuilding the volunteer pool and restarting many of these volunteer programs which add a spark to the hospital's day-to-day activities.

If you are interested in volunteering at the hospital, please contact **Meg Sattin**, (519) 693-4441 x 5595.

## New Office Location

### WE'VE MOVED

FCHS Foundation's office is now in the same building as Newbury Dental, located across from FCHS Staff Parking. Entry is through the white door next to the Four Counties Health Services Foundation sign. We welcome you to come visit us for a cup of coffee anytime. Business hours are Monday to Thursday, 9 AM-3:30 PM.

If you need assistance entering, please call us at **519-693-4441 ext. 2438**. Hope to see you soon!



## 26<sup>th</sup> Annual Golf Tournament Friday, July 15<sup>th</sup>, 2022

FCHS Foundation's 2022 Golf Tournament and Raffle raised \$27,587 for medical equipment at Four Counties Health Services! Proceeds have gone toward the purchase of a Defibrillator for FCHS Emergency Department as well as a Medical Refrigerator for safe storage of insulin and other temperature sensitive supplies. THANK YOU golfers, sponsors, donors, raffle ticket purchasers, and volunteers for your support of Care Closer to Home!

### Platinum Sponsors

FCHS FOUNDATION

### Gold Sponsors

CF Industrial Products INC  
Chorley + Bisset Consulting Engineers  
Downs Barristers & Solicitors  
Glencoe Guardian Pharmacy  
Hicks Wealth Management Group  
JPW Systems INC  
Linde Mechanical INC  
Tonda Construction LTD  
Van Heck Funeral Home LTD  
West Elgin Mutual Insurance

FCHS FOUNDATION

### Silver Sponsors

Authentic Customs General Contracting  
Black & McDonald Ltd  
Bothwell Automotive  
Bothwell Foodland  
Bothwell Furniture  
Celtic Star Enterprises  
GenCare Generator Service  
Hamstra Carpet One Floor & Home  
Harold Marcus LTD  
Howard Mutual Insurance Company  
Janet M. Gibbons Barrister and Solicitor  
Johnston Bros (Bothwell) LTD  
Melbourne Farm Automation LTD  
Optimist Club of Bothwell  
Royal Canadian Legion BR 252 Bothwell  
Royal Canadian Legion BR 510 Melbourne  
Sabbes Tree Farm  
Swish Maintenance LTD  
Tom Jeffery  
Trane Building Services  
Steve's Sign Shop

FCHS FOUNDATION

### Bronze Sponsors

Bullet INC  
McNaughton Dodge Chrysler INC  
Old Autos Publications INC  
Southwest Doors & Hardware (1995) LTD  
Waddick Fuels

FCHS FOUNDATION

## Service Club Presentations



Glencoe District Lions Club - \$1,000



Kiwanis Club of West Lorne  
St Thomas Jackpot Bingo - \$2,500