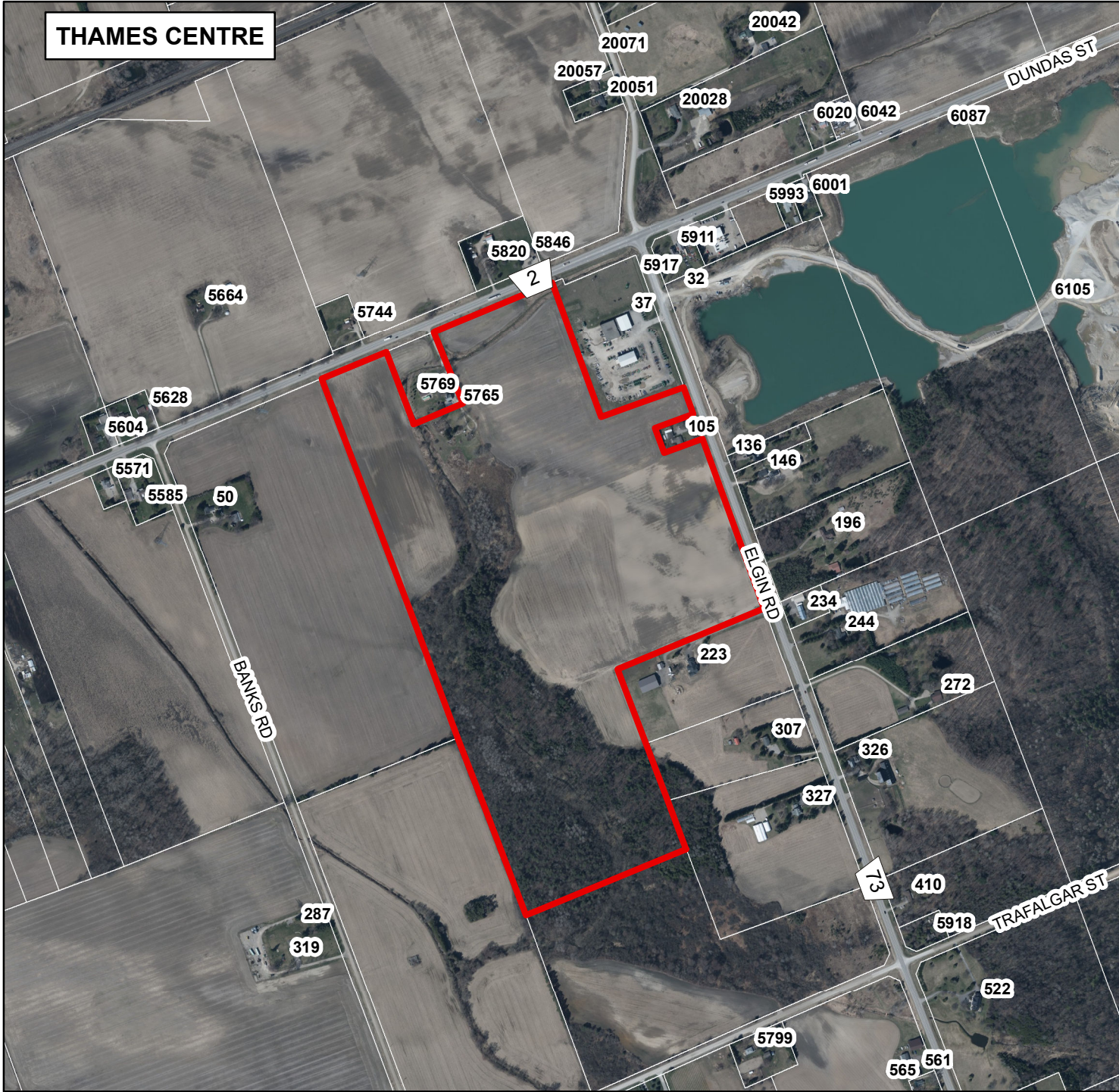


THAMES CENTRE



LOCATION MAP


Description:
OFFICIAL PLAN AMENDMENT NO. 32
MUNICIPALITY OF THAMES CENTRE

File Number:
39-TC-OPA32

Prepared by: Planning Department
The County of Middlesex, December 05, 2024.



LEGEND

 LANDS SUBJECT TO AMENDMENT NO.32

