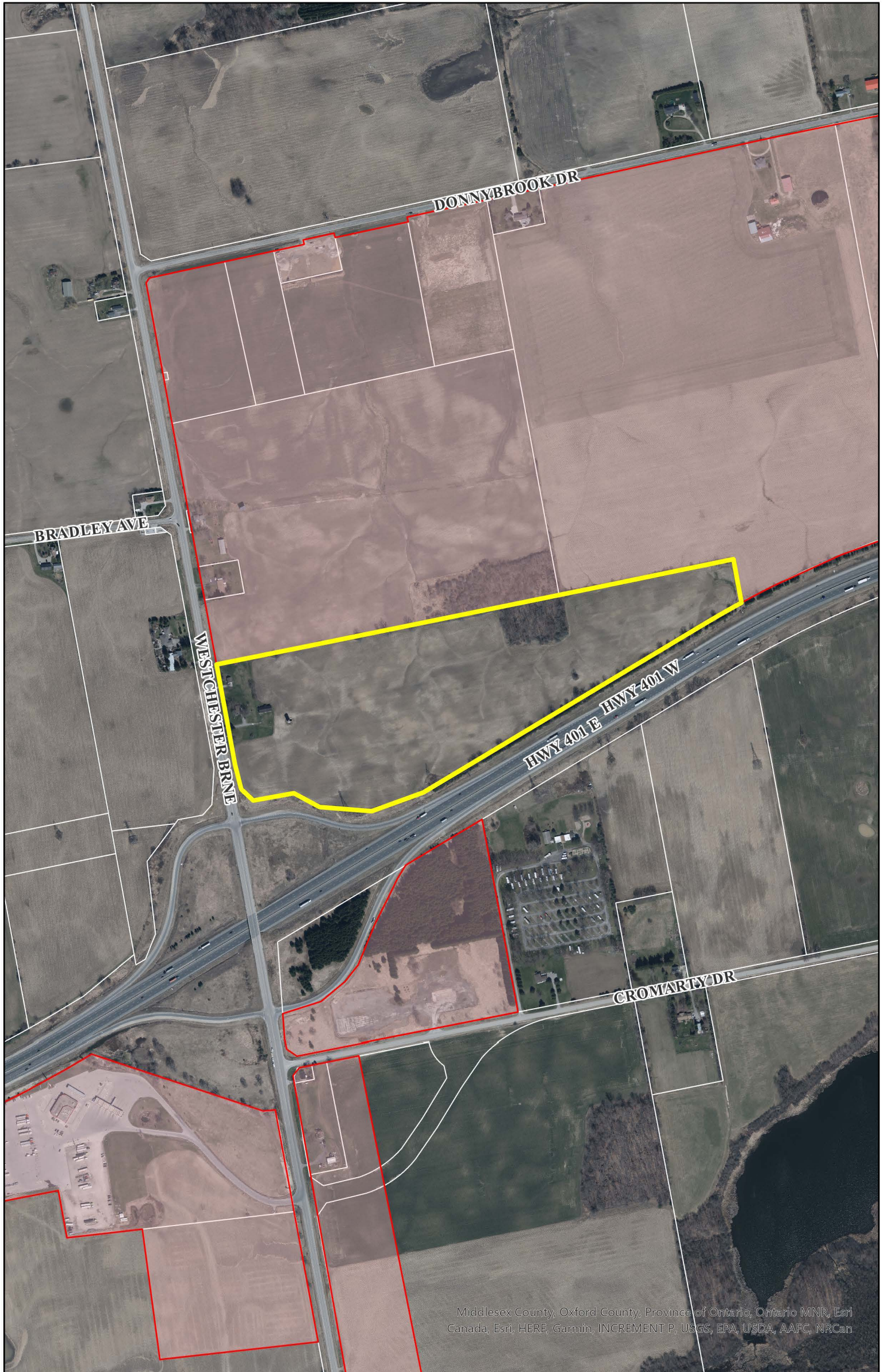


FIGURE ONE: TO COUNTY OF MIDDLESEX DECISION FOR THAMES CENTRE OFFICIAL PLAN AMENDMENT NO. 27



Middlesex County, Oxford County, Province of Ontario, Ontario MNR, Esri Canada, Esri, HERE, Garmin, INCREMENT P, USGS, EPA, USDA, AAFC, NRCan



LANDS SUBJECT TO DEFERRAL